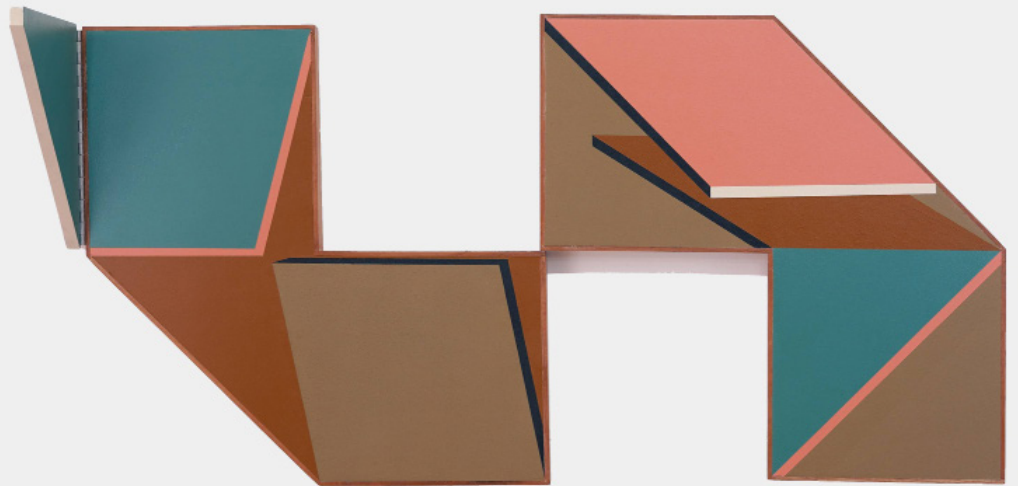
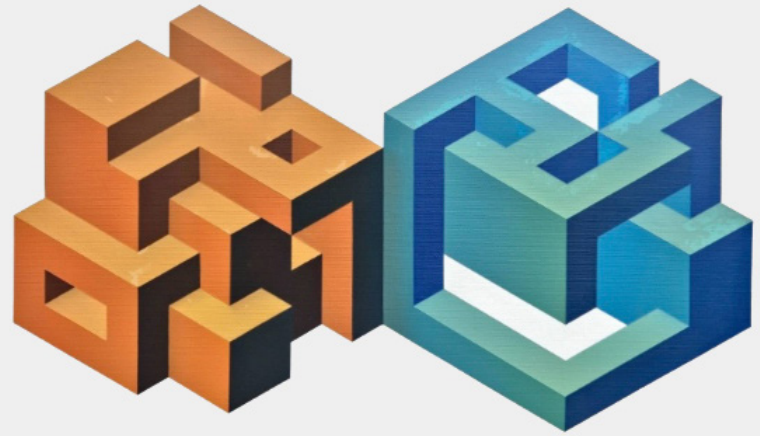


THOMAS  
NICKLES  
PROJECT



Ernesto García Sánchez  
Roger Toledo

Incomplete Trajectories

THOMAS  
NICKLES  
PROJECT

Ernesto García Sánchez and Roger Toledo

New York – Thomas Nickles Project is pleased to announce *Incomplete Trajectories*, an exhibition of new work by Ernesto García Sánchez and Roger Toledo, on view from March 27 until May 11, 2025. Both artists push the boundaries of traditional painting by breaking down and reassembling its core elements to create fresh perspectives on form, color, and meaning. Moving beyond narrative representation, they experiment with structure and composition to rethink expectations of how we see and understand art.

García Sánchez deconstructs the form of painting by isolating its essential elements – color, line, shape, form, texture, space – only to reconstruct them in new and unexpected formats. His practice is rooted in daily observation and experimentation rather than adhering to rigid narratives. “I dedicate my life to doing and not to narrating,” he states, describing his obsession with synthesis and the creation of a “filtered reality” where only shapes exist, devoid of identity or conflict. This minimalist abstraction extends to the manipulation of materials, with some works incorporating hinges to allow movement, while others juxtapose contrasting colors and textures to subvert conventional pictorial space. By reframing painting as a dynamic system of shifting relations rather than a fixed image, García Sánchez questions the constraints of the medium, embracing geometry and fractals to drive a continuous process of discovery.

Toledo, on the other hand, engages the cube as both a structure and a conceptual framework, exploring its permutations as an “incomplete structure.” His investigation began in 2008 while studying at Instituto Superior de Art (ISA) with his Homage to LeWitt series, which, under critique, prompted questioning about the necessity to revisit a form that Sol LeWitt had already “exploited to the point of exhaustion.” This led Toledo to interrogate notions of artistic freedom and constraint, pushing him to redefine the cube as a space of both limitation and possibility. Carrying this framework into his next body of work, Toledo approached landscape painting as a systemic study of color, using the cube to meticulously isolate hues to reconceive the natural world.

Over time, this exploration became increasingly granular, culminating in the pixel as the fundamental building block of color. For Toledo, the pixel becomes a site of continuous experimentation, where each iteration remains intentionally unresolved yet moving toward new possibilities. Through various mediums, Toledo’s

evolving practice continues to navigate the tension between form and flux, challenging existing notions of completeness.

Together, García Sánchez and Toledo engage in an intellectual exercise that challenges not only the parameters of visual representation, but also the constructed realities we take for granted. By investigating the formal components of visual art, their works suggest that just as artistic elements can be rearranged, so too can the systems and norms that shape our world.

*Incomplete Trajectories* invites viewers to embrace uncertainty and the potential for change. Through relentless experimentation, García Sánchez and Toledo remind us that perception is fluid, making space to push boundaries until they become new realities.

THOMAS  
NICKLES  
PROJECT



**Ernesto García Sánchez**  
*Gray Matter, 2023*  
Acrylic on Canvas  
Series of Six  
20 x 20cm / 7.87" x 7.87" each  
20 x 120cm / 7.87" x 47" total

THOMAS  
NICKLES  
PROJECT



**Ernesto García Sánchez**

*Polimorfos - pine brook and King salmon, 2025*

*Acrylic on Wood Panel*

*60 x 60 cm each / 23.6" x 23.6"*

*Total size: 120 x 61 x 35(d) cm / 47.2" x 24" x 13.8"*

THOMAS  
NICKLES  
PROJECT



**Ernesto García Sánchez**

*Polimorfos - beta fish and trick or treat, 2025*

*Acrylic on Wood Panel*

*60 x 60 cm / 23.6" x 23.6" each*

*Total size: 155 x 67 cm / 61" x 26.4"*

THOMAS  
NICKLES  
PROJECT



**Ernesto García Sánchez**

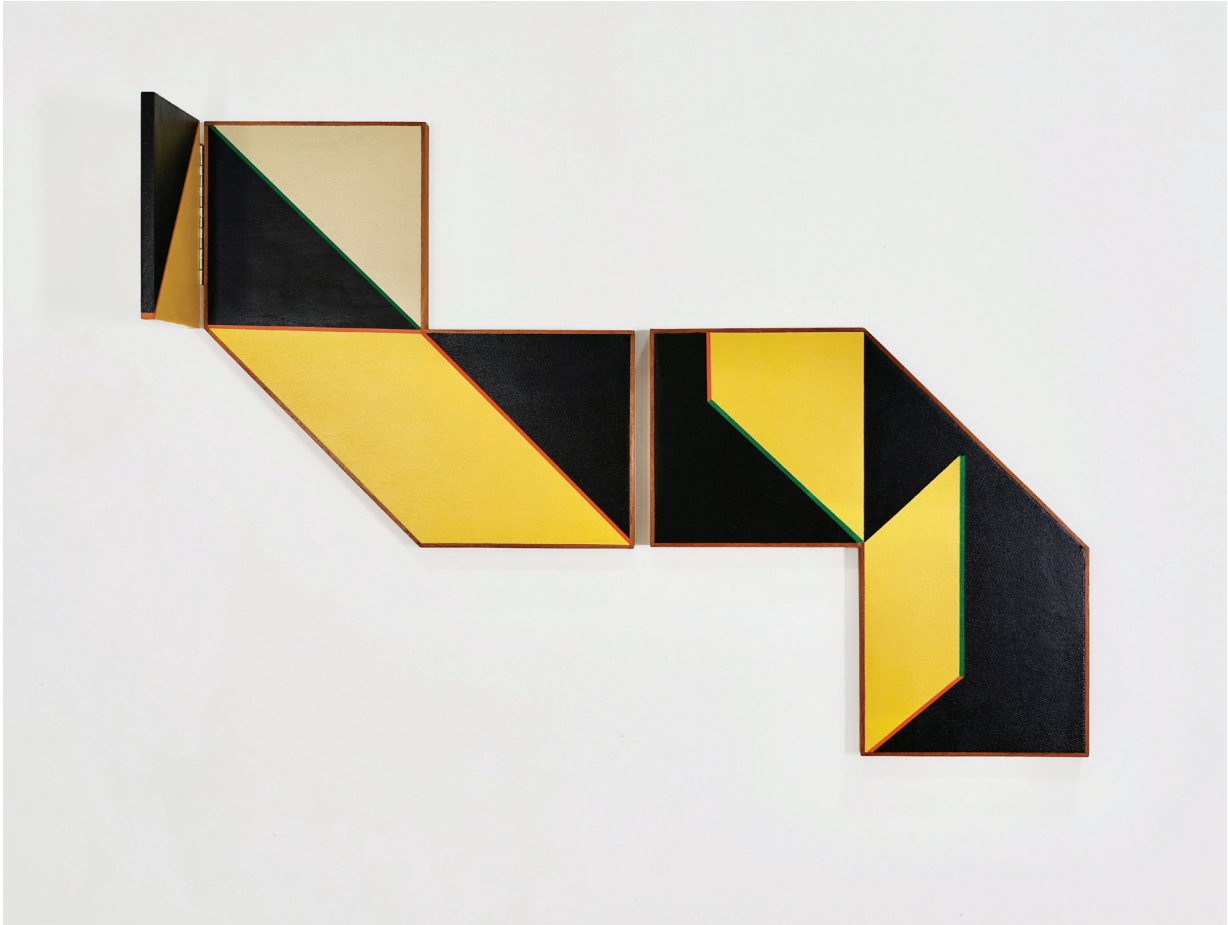
*Polimorfos - green purple and gray, 2025*

*Acrylic on Wood Panel*

*60 x 60 cm / 23.6" x 23.6" each*

*Total size: 155 x 67 cm / 61" x 26.4"*

THOMAS  
NICKLES  
PROJECT



**Ernesto García Sánchez**

*Polimorfos - Yellow and Black, 2025*

*Acrylic on Wood Panel*

*120 x 90cm*

*47" x 35"*



THOMAS  
NICKLES  
PROJECT



**Ernesto García Sánchez**  
*Practical Painting and Other Objects, Fragment 5, 2024*  
Acrylic on Wood  
20 x 20cm  
7.87" x 7.87"

THOMAS  
NICKLES  
PROJECT



**Ernesto García Sánchez**

*Practical Painting and Other Objects, Fragment 7, 2024*

*Acrylic on Wood*

*20 x 20cm*

*7.87" x 7.87"*

THOMAS  
NICKLES  
PROJECT



**Ernesto García Sánchez**

*Practical Painting and Other Objects, Fragment 6, 2024*

*Acrylic on Wood*

*20 x 20cm*

*7.87" x 7.87"*

THOMAS  
NICKLES  
PROJECT



**Ernesto García Sánchez**

*Practical Painting and Other Objects, Fragment 2, 2024*

*Acrylic on Wood*

*37 x 31.5cm*

*14.5" x 12.5"*

THOMAS  
NICKLES  
PROJECT



**Ernesto García Sánchez**

*Practical Painting and Other Objects, Fragment 3, 2024*

Acrylic on Wood

20 x 20cm

7.87" x 7.87"

THOMAS  
NICKLES  
PROJECT



**Ernesto García Sánchez**

*Practical Painting and Other Objects, Fragment 9, 2024*

Acrylic on Wood

20 x 20cm

7.87" x 7.87"

THOMAS  
NICKLES  
PROJECT



**Ernesto García Sánchez**

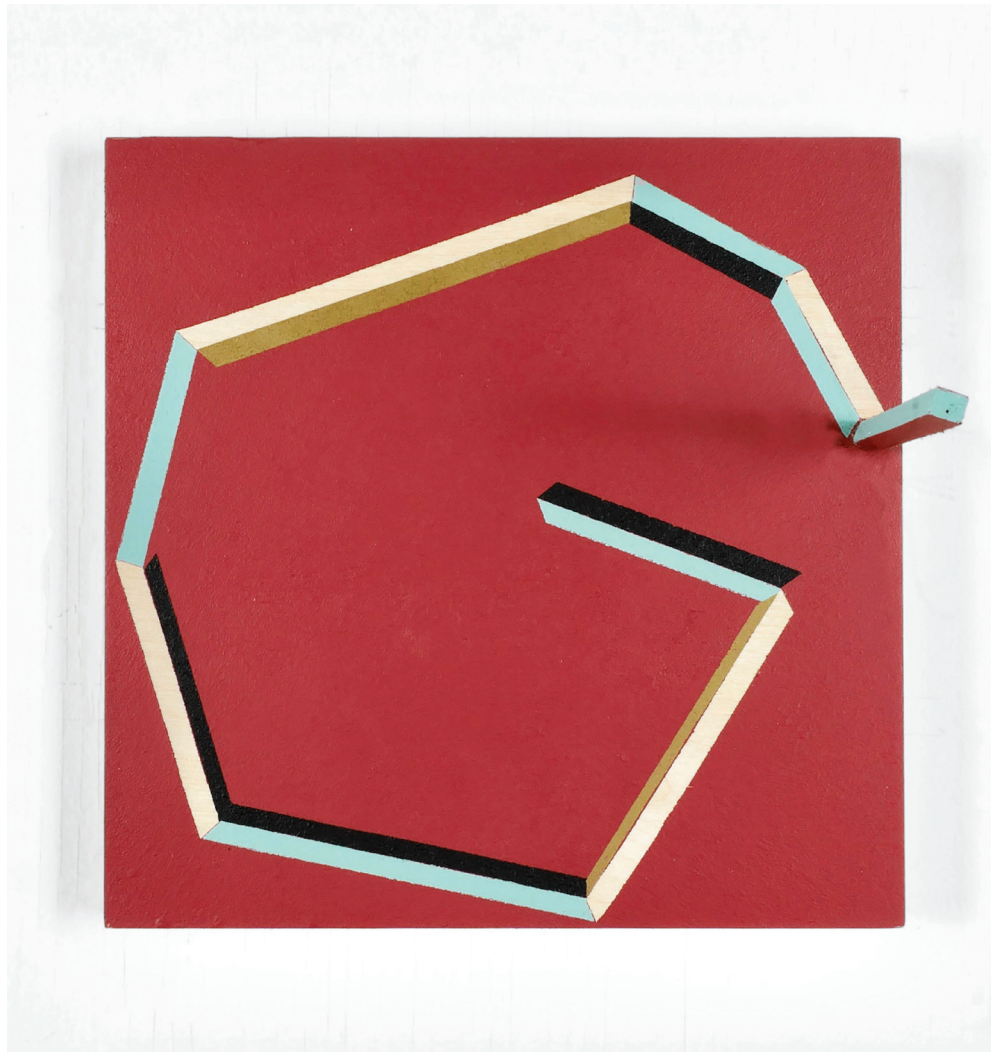
*Practical Painting and Other Objects, Fragment 8, 2024*

Acrylic on Wood

20 x 20cm

7.87" x 7.87"

THOMAS  
NICKLES  
PROJECT



**Ernesto García Sánchez**  
*Practical Painting and Other Objects, Fragment 4, 2024*  
Acrylic on Wood  
20 x 20cm  
7.87" x 7.87"



THOMAS  
NICKLES  
PROJECT



**Ernesto García Sánchez**  
*Practical Painting and Other Objects, Fragment 10, 2024*  
Acrylic on Wood  
20 x 20cm  
7.87" x 7.87"

THOMAS  
NICKLES  
PROJECT



**Ernesto García Sánchez**

*Practical Painting and Other Objects, Fragment 1, 2024*

*Acrylic on Wood*

*20 x 20cm*

*7.87" x 7.87"*

THOMAS  
NICKLES  
PROJECT

**Ernesto García Sánchez:** (b. 1989, Havana, Cuba)

Ernesto García Sánchez focuses on deconstructing and reconstructing the elements of painting to investigate the form itself. He studied at the Academy of Fine Arts of San Alejandro, and later at the Instituto Superior de Arte (ISA) in Havana, Cuba. Inspired by architecture, design, and forms observed in the physical world, García Sánchez's approach does not use art as a narrative tool. Instead, his work is an introspective inquiry into the essence of painting, inviting viewers to reconsider its intrinsic elements.

By examining the fundamental building blocks of painting, García Sánchez reframes their connections and emphasizes each element's individuality. In this way, viewers are introduced to different modes of engaging with a painting, challenging the traditional frontal or flat perspectives in which we typically interact with paintings. His works reveal subtle imperfections and visceral questions, reflecting his belief that art is a space for curiosity and exploration, not answers.

García Sánchez is represented by Mindy Solomon Gallery (Miami, Florida), Madison Gallery (San Diego, California), and Alejandra Topete Gallery (Mexico City). In addition to his artistic practice, he founded Taller 62 in Mérida, Yucatán. This initiative serves as both an art studio and exhibition space, aiming to foster artistic interaction and collaboration within the local community.

García Sánchez has exhibited in group and solo shows worldwide, including Cuba, Mexico, Denmark, and the United States. His work was also featured in multiple projects across two editions of the Havana Biennial. García Sánchez's practice continues to challenge and expand the boundaries of abstraction and minimalism, presenting painting as both a question and process.

García Sánchez lives and works in Mérida, Yucatán, Mexico.

THOMAS  
NICKLES  
PROJECT

**Roger Toledo:** (b. 1986, Camagüey, Cuba)

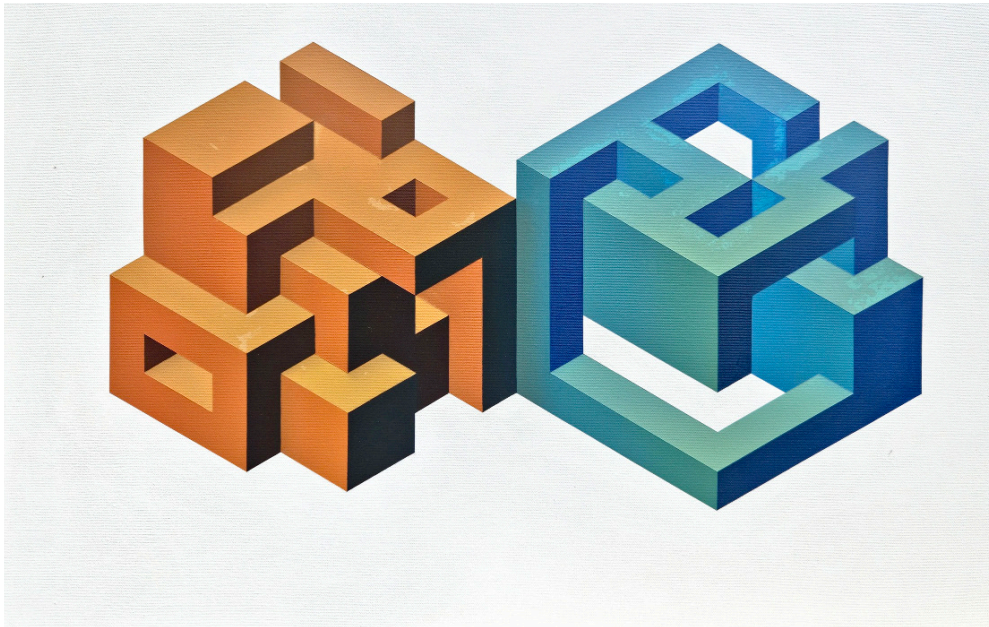
Roger Toledo is an abstract artist whose work explores the relationship between structure, form, and color. From an early age, Toledo showed a deep aptitude for drawing and painting, which led him to study at the Vicentina de la Torre Academy of Arts, graduating in 2005. He continued his education at the Instituto Superior de Arte (ISA), developing his distinctive artistic voice.

Toledo's practice is characterized by the use of geometric patterns, layered textures, and bold color to create dynamic spatial relationships. This approach allows him to reflect on universal and Cuban pictorial traditions, while also offering space for introspection and innovation. Rather than the desire to establish a signature style, Toledo's work is driven by a pluralistic vision, where each piece evolves as a unique exploration of form and content.

During his residences in New York and Minnesota in 2014 and 2015 respectively, Toledo's practice underwent a dramatic evolution. Exposure to contemporary paintings that incorporated industrial techniques and technological processes led him to rethink his own methods, moving beyond traditional Cuban training focused on classical technique and craftsmanship. Toledo's experimentation with unconventional tools expanded his creative processes, shifting from abstraction to incorporating textured surfaces, landscape elements and varied modes of expression.

Toledo has exhibited in numerous group and solo shows in Cuba, Mexico, Sweden, and the United States. His work can be found in numerous private collections in Europe, Latin America, and the United States. Toledo lives and works as an independent artist in Havana, Cuba.

THOMAS  
NICKLES  
PROJECT



**Roger Toledo**  
*Dos Perspectivas (Two Perspectives)*, 2025  
Oil on Canvas  
46 x 68cm  
16.5" x 26.8"

THOMAS  
NICKLES  
PROJECT



**Roger Toledo**  
*Perspectiva 20, 2025*  
Oil on Canvas  
46 x 42cm  
16.5" x 18.1"

THOMAS  
NICKLES  
PROJECT



**Roger Toledo**  
*Perdiendo el rumbo (Perspectiva 1 y 10), 2025*  
Oil on Canvas  
61 x 42cm  
24" x 18.1"

THOMAS  
NICKLES  
PROJECT



**Roger Toledo**

*Perdiendo el rumbo (Perspectiva 6 y 22), 2025*

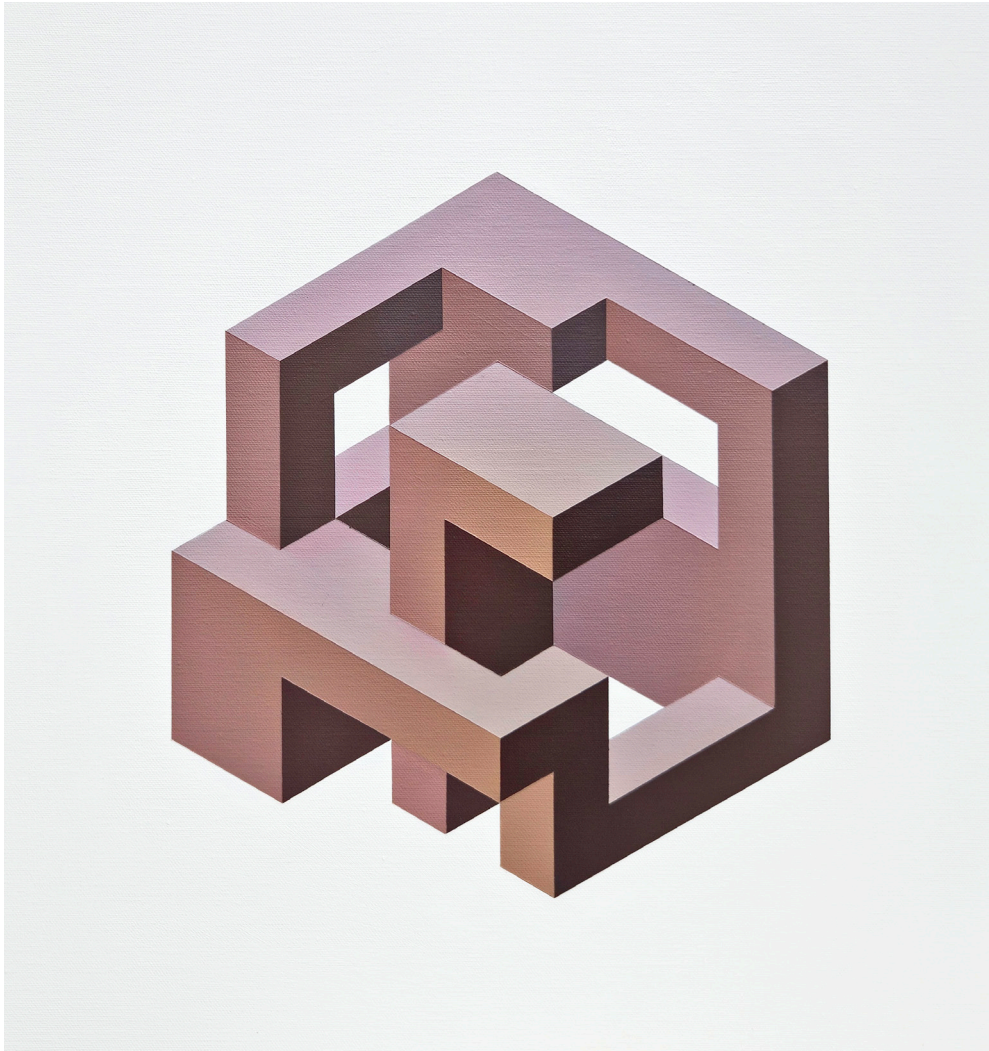
*Oil on Canvas*

*61 x 42cm*

*24" x 18.1"*



THOMAS  
NICKLES  
PROJECT



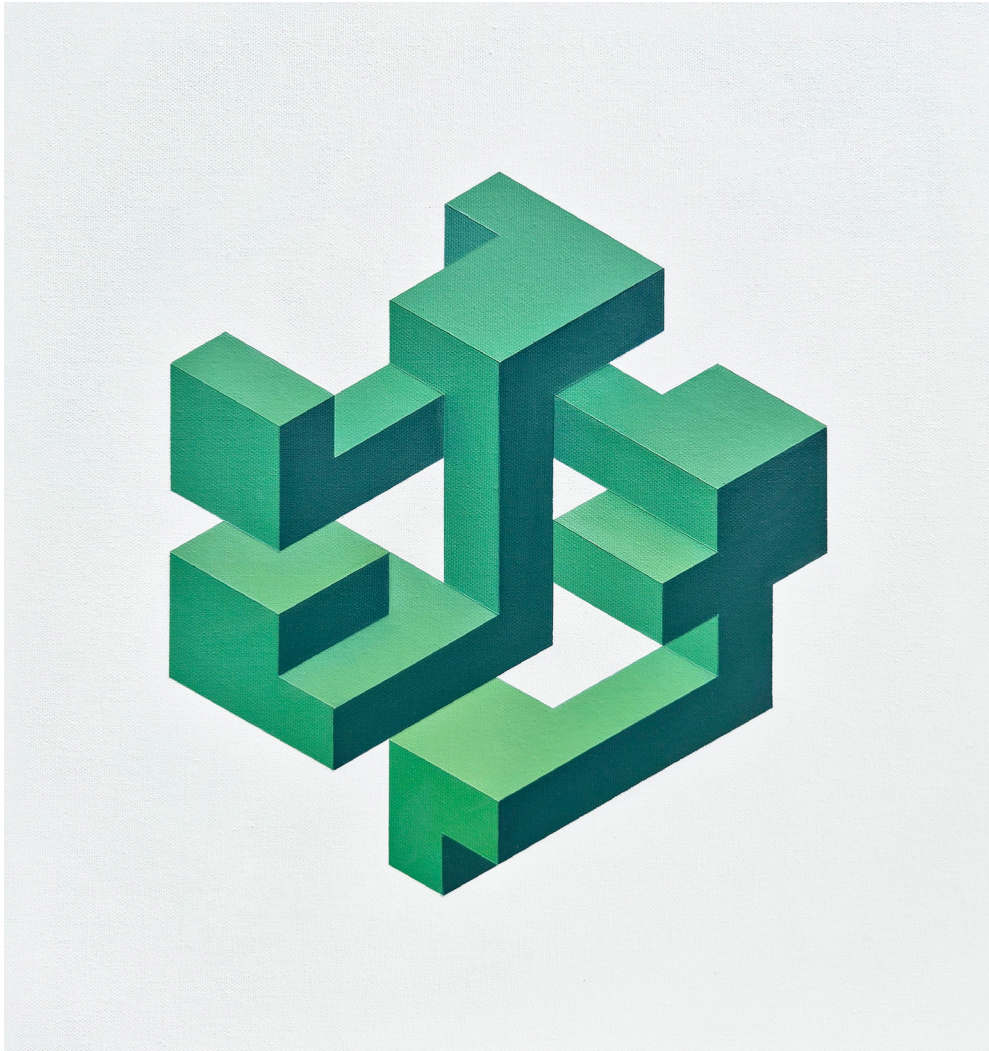
**Roger Toledo**  
*Perspectiva 7, 2025*  
Oil on Canvas  
46 x 42cm  
16.5" x 18.1"

THOMAS  
NICKLES  
PROJECT



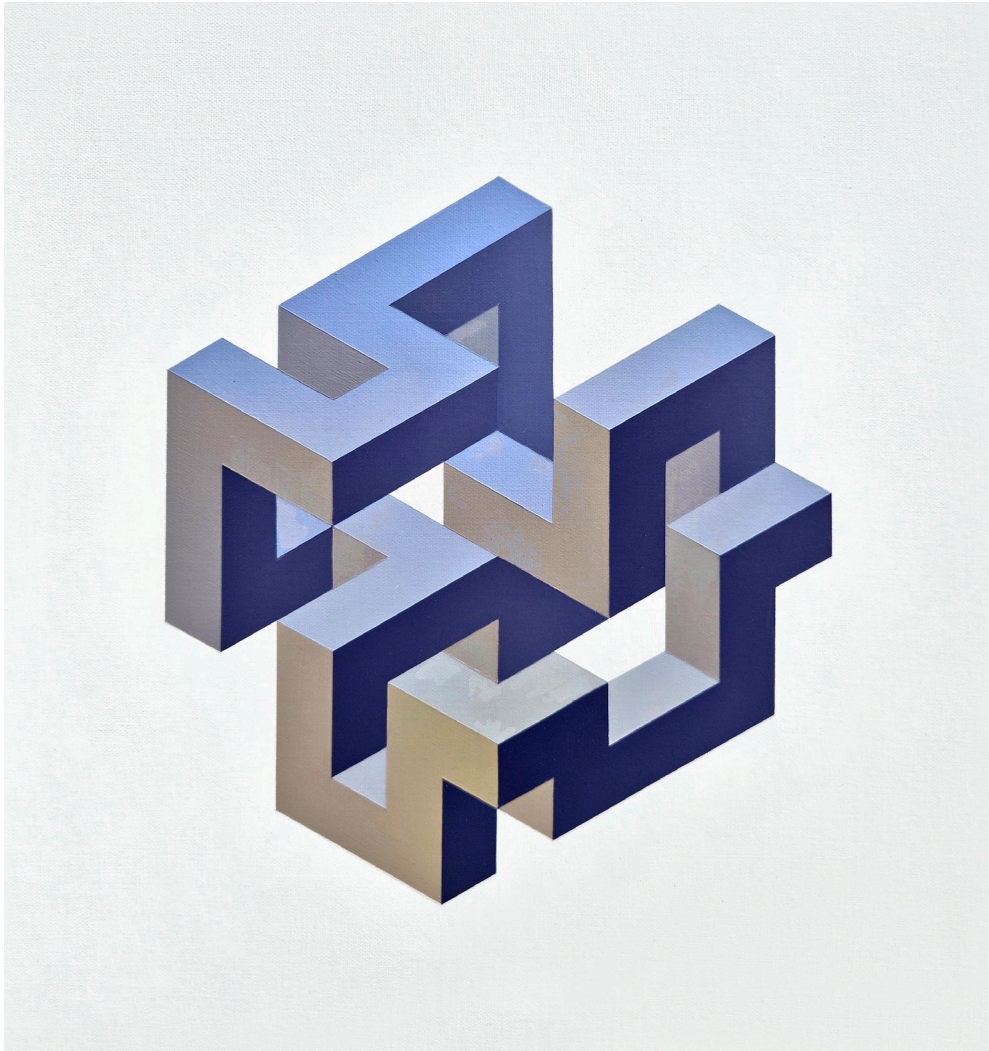
**Roger Toledo**  
*Perspectiva 9, 2025*  
Oil on Canvas  
46 x 42 cm  
18" x 16.5"

THOMAS  
NICKLES  
PROJECT



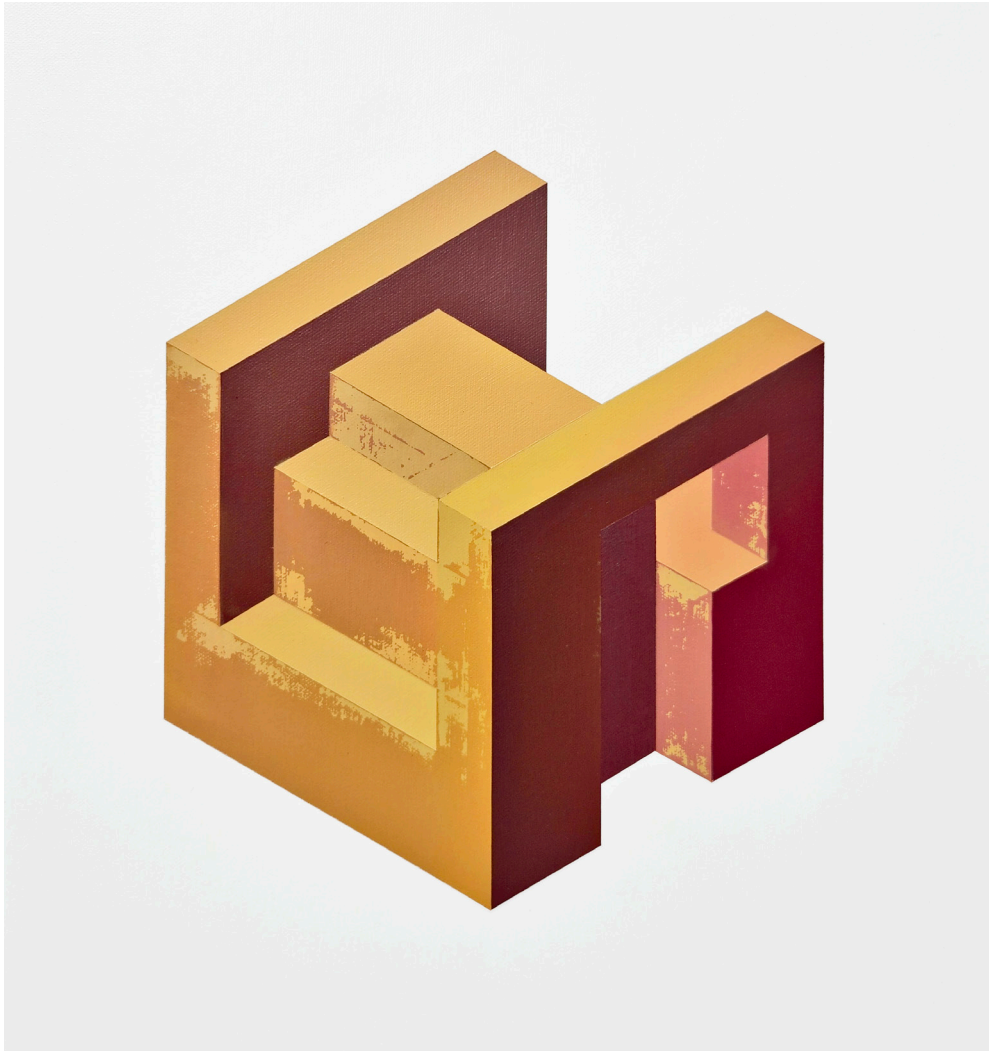
*Roger Toledo*  
*Perspectiva 12, 2025*  
*Oil on Canvas*  
*46 x 42cm*  
*16.5" x 18.1"*

THOMAS  
NICKLES  
PROJECT



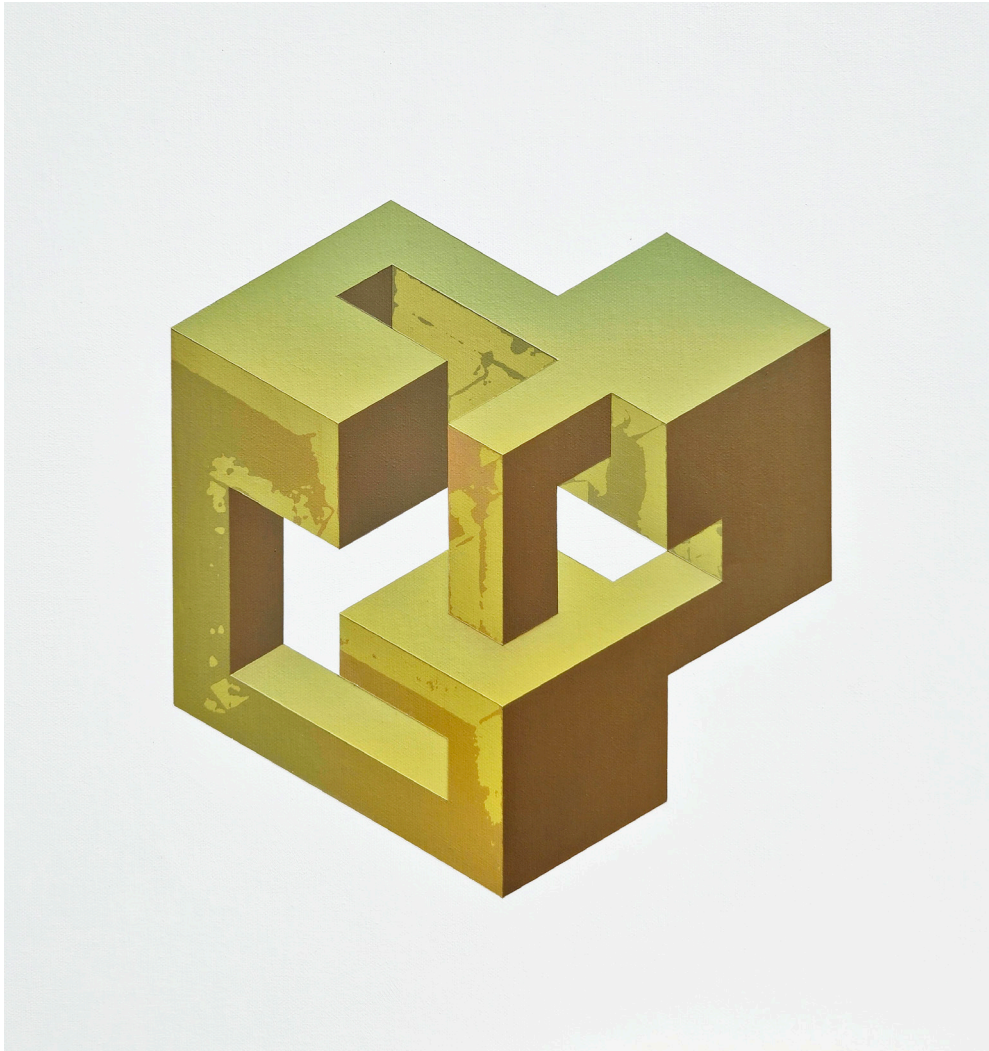
**Roger Toledo**  
*Perspectiva 14, 2025*  
Oil on Canvas  
46 x 42cm  
16.5" x 18.1"

THOMAS  
NICKLES  
PROJECT



**Roger Toledo**  
*Perspectiva 17, 2025*  
Oil on Canvas  
46 x 42cm  
16.5" x 18.1"

THOMAS  
NICKLES  
PROJECT



**Roger Toledo**  
*Perspectiva 32, 2025*  
Oil on Canvas  
46 x 42cm  
16.5" x 18.1"

THOMAS  
NICKLES  
PROJECT



**Roger Toledo**  
*Perspectiva 47 (variation), 2025*  
Oil on Canvas  
120 x 108cm  
47.2" x 42.5"

THOMAS  
NICKLES  
PROJECT



**Roger Toledo**  
*Perspectiva 47, 2025*  
Oil on Canvas  
46 x 42cm  
16.5" x 18.1"



THOMAS  
NICKLES  
PROJECT



**Roger Toledo**  
*Perspectiva 51, 2025*  
Oil on Canvas  
46 x 42cm  
16.5" x 18.1"

THOMAS  
NICKLES  
PROJECT



**Roger Toledo**  
*Ink and graphite on paper*

THOMAS | 47 Orchard Street  
NICKLES | New York, NY 10002  
PROJECT | 917-902-6682